

ELEV 13

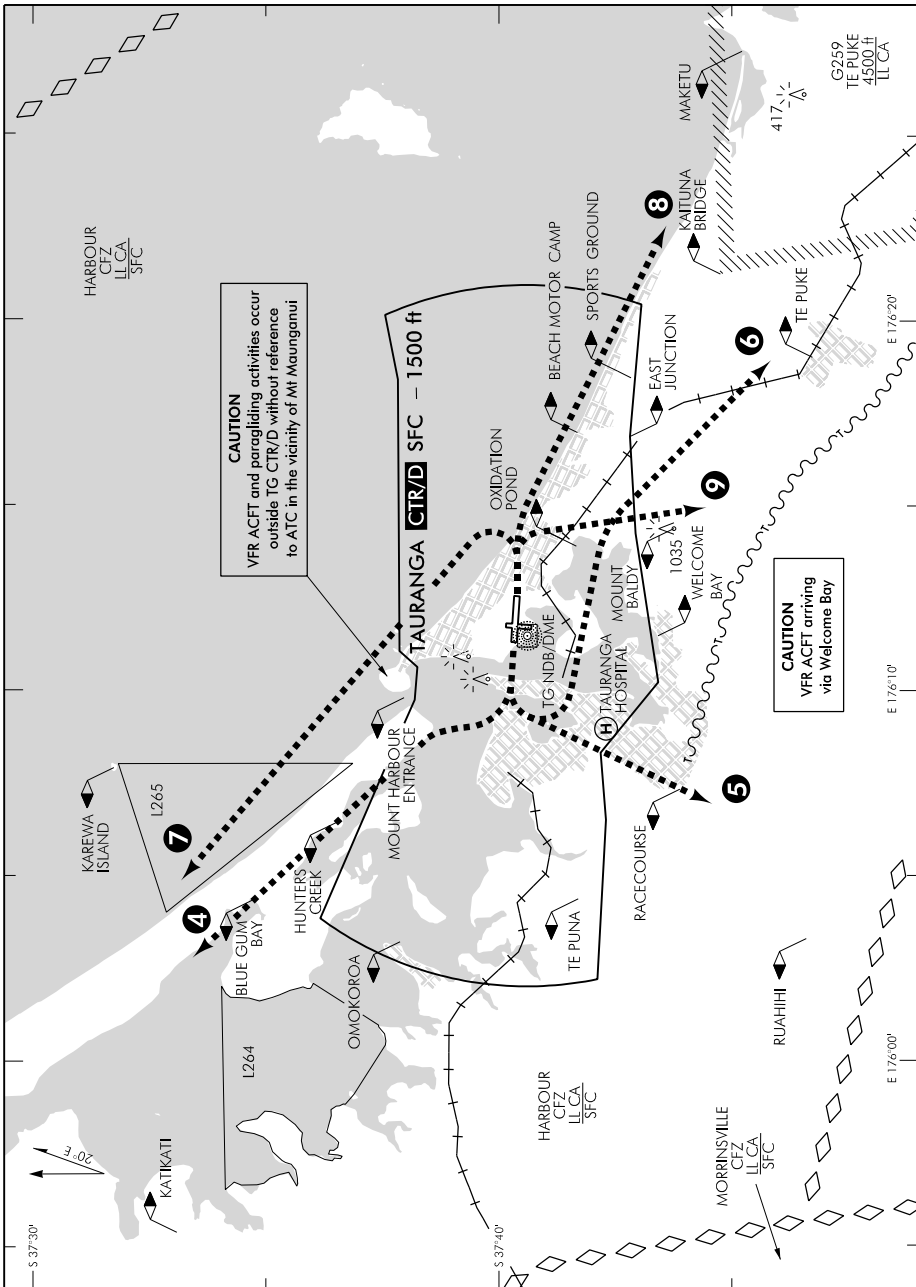
NZTG

TOWER: 118.3 123.4 129.2

TAURANGA

VFR DEPARTURE PROCEDURES (1)

ATIS: 126.6



Changes from 9 NOV 17: DEP tracks updated.

Effective: 7 NOV 19

© Civil Aviation Authority

TAURANGA

VFR DEPARTURE PROCEDURES (1)



ELEV 13

NZTG

TOWER: 118.3 123.4 129.2

TAURANGA**VFR DEPARTURE PROCEDURES (2)**

ATIS: 126.6

REFER TO DIAGRAM ON PREVIOUS PAGE AND VISUAL NAVIGATION CHARTS**For VFR flights departing Tauranga and leaving the Tauranga CTR/D****General**

Listen to ATIS for conditions at Tauranga aerodrome.

Altitude and routing instructions may be varied by Tauranga Tower.

More direct plain language instructions may be issued in periods of low traffic.

Aircraft leaving CTR to the north and west – caution low flying zones L264 and L265.

Extensive VFR operations and training may take place in uncontrolled airspace adjacent to the Tauranga CTR/D and in the vicinity of Te Puke.

Departure Procedures

During weekends, public holidays and peak traffic periods contact Tower when ready to start; any air traffic delay will be advised at this time.

Unless otherwise cleared, follow published circuit rules and then leave the circuit directly onto the cleared departure procedure.

Report to Tower when you have vacated the Tauranga CTR/D**Departure Procedures RWY 25**

- ④ Hunters Creek Departure Turn right after departure thence leave the CTR on track Hunters Creek 1500 ft or below. *CTN: VFR ACFT may be arriving seawards of the Matakana coastline.*
- ⑤ Hospital Departure Track west of Tauranga Hospital thence leave the CTR on track Racecourse 1500 ft or below. *CTN: VFR ACFT may be arriving via Welcome Bay.*
- ⑥ Te Puke Departure Track via left hand downwind thence leave the CTR on track Te Puke 1500 ft or below. *CTN: VFR ACFT may be arriving via Welcome Bay.*
Note: Availability subject to joining traffic.

Departure Procedures RWY 07

- ⑦ Main Beach Departure Turn LEFT after departure thence leave the CTR seawards of Mt Maunganui 1500 ft or below. *CTN: VFR ACFT may be arriving via Hunters Creek.*
- ⑧ East Departure Leave the CTR tracking east following the coast 1500 ft or below.
- ⑨ Baldy Departure Track east of Oxidation Ponds thence leave the CTR on track Mt Baldy 1500 ft or below. *CTN: VFR ACFT may be arriving by Welcome Bay.*

Communications

When clear of the Tauranga CTR/D, continue on Harbour CFZ 123.65 MHz.

Communications Failure

Vacate the Tauranga CTR/D via the assigned departure procedure or instructions, **Squawk 7600.**

