



ELEV 13

CAT A,B,C

TAURANGA

NZTG

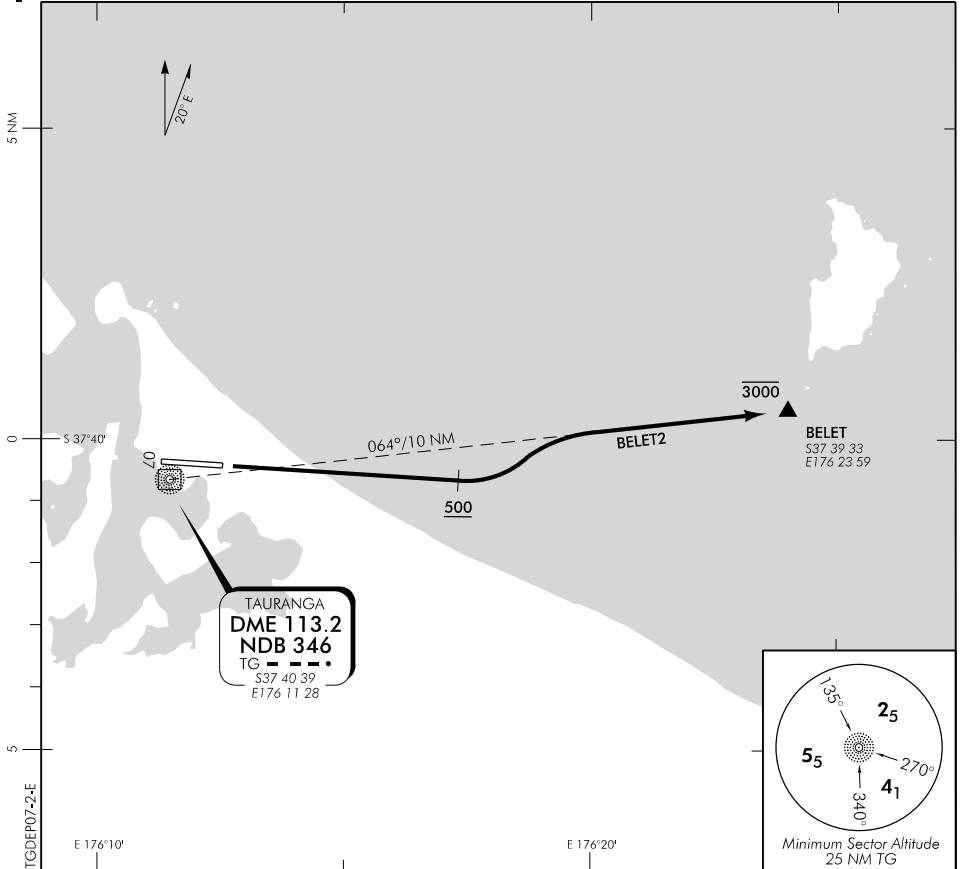
DEPARTURES RWY 07

BAY APPROACH: 119.5 123.8

TOWER: 118.3 123.4 129.2

ATIS: 126.6

UNATTENDED: 118.3



Changes from 30 MAR 17: COM header ATC collsign.

ALL DEPARTURES

- Note
1. **Tauranga Tower on watch** – When airborne contact BAY APPROACH 119.5 MHz
 2. **Tauranga Tower off watch** – refer Arrival/Departure page
 3. Minimum net climb gradient 3.3% (200 ft/NM)

BELET TWO DEPARTURE – (BELET2)

- Maintain RWY centreline to MNM turn altitude **500 ft**
- Turn **LEFT** intercept track 064°
- Maintain **3000 ft** to BELET
- Intercept cleared route within 25 TG DME or as instructed by radar

Effective: 24 MAY 18

ELEV 13

CAT A,B,C

TAURANGA

NZTG

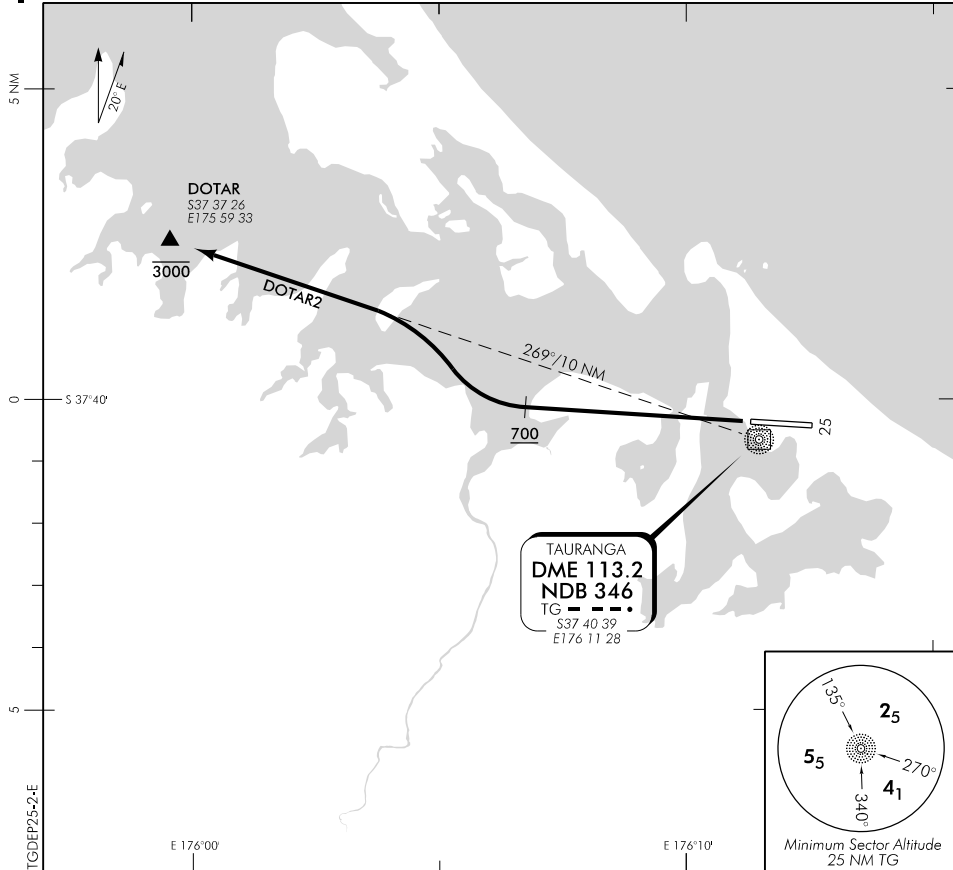
DEPARTURES RWY 25

BAY APPROACH: 119.5 123.8

TOWER: 118.3 123.4 129.2

ATIS: 126.6

UNATTENDED: 118.3



Changes from 30 MAR 17: COM header-ATC collsign.

ALL DEPARTURES

CAUTION: Close-in obstacles not considered in climb gradient

– Trees maximum elevation 100 ft AMSL right of extended centreline between 180 m and 500 m from RWY end

- Note
1. **Tauranga Tower on watch** – When airborne contact BAY APPROACH 119.5 MHz
 2. **Tauranga Tower off watch** – refer Arrival/Departure page
 3. All climb gradients stated apply from take-off

DOTAR TWO DEPARTURE – (DOTAR2)

Minimum net climb gradient 5.0% (310 ft/NM) to **5000 ft**

- Maintain RWY centreline to MNM turn altitude **700 ft**
- Turn RIGHT intercept track 269°
- Maintain **3000 ft** to DOTAR
- Intercept cleared route within 25 TG DME

Effective: 24 MAY 18

TAURANGA DEPARTURES RWY 25

