



ELEV 13

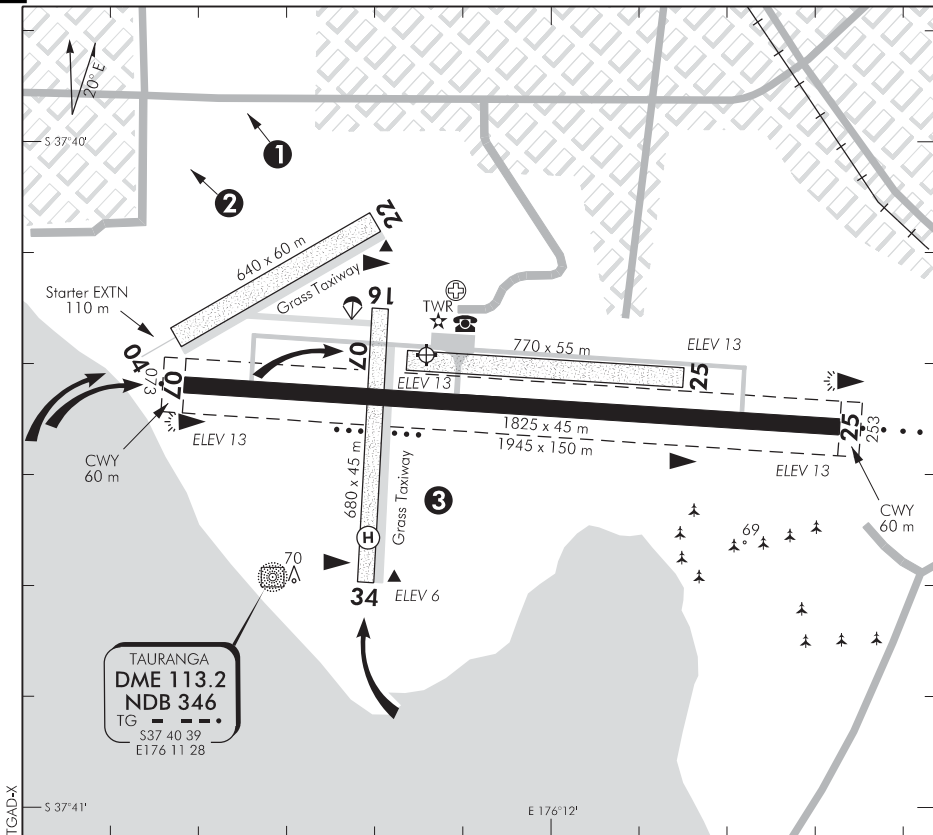
NZTG

TOWER: 118.3 123.4 129.2

UNATTENDED: 118.3

**TAURANGA
AERODROME (1)**

ATIS: 126.6



Changes from 28 MAR 19: Note 2 — container crane elevation increased.

- ❶ Terrain rises to 762 ft AMSL at 2.5 NM northwest of aerodrome. Aircraft and paragliders may be operating in the vicinity of Mount Maunganui without reference to Tauranga Tower.
- ❷ Eight container cranes, up to 361 ft AMSL, at 1–1.5 NM.
- ❸ Simultaneous helicopter operations on grass RWY 16/34, parallel to and 165 m south of sealed RWY 07/25, permitted in VFR conditions when ATC is on duty.
- 4. Circuit:

Powered aircraft	Glider and tugs
RWY 25, Gr RWY 16, 22, 25 — Left hand	RWY 04 — Left hand
RWY 07, Gr RWY 04, 07, 34 — Right hand	RWY 22 — Right hand

When ATC is on watch, unless otherwise instructed, circuit altitudes are:
 All aircraft — 1000 ft AMSL
- 5. Intensive gliding operations may take place particularly during weekends, Wednesday afternoons and public holidays; gliders and tugs use RWY 04/22.
- 6. Circuit training weekdays 0800 – 1800, weekends and public holidays 1000 – 1700, nights ECT – 2130.
- 7. No simulated EFATO off Gr RWY 07, 34, 04 or B RWY 07.

(continued)

S 37 40 19 E 176 11 46

Effective: 30 JAN 20

© Civil Aviation Authority

**TAURANGA
AERODROME (1)**

**TAURANGA
AERODROME (2)**

8. Simultaneous parallel operations on paved and grass runways 07/25 permitted only for aircraft 2300 kg or less in VFR conditions and when ATC is on duty.
9. **CAUTION:** Bird hazard. Feral pigeons, gulls, starlings, spur winged plovers and dotterels are common.

