



ELEV 13

CAT A,B,C,D

TAURANGA

RWY 07 THR ELEV 13

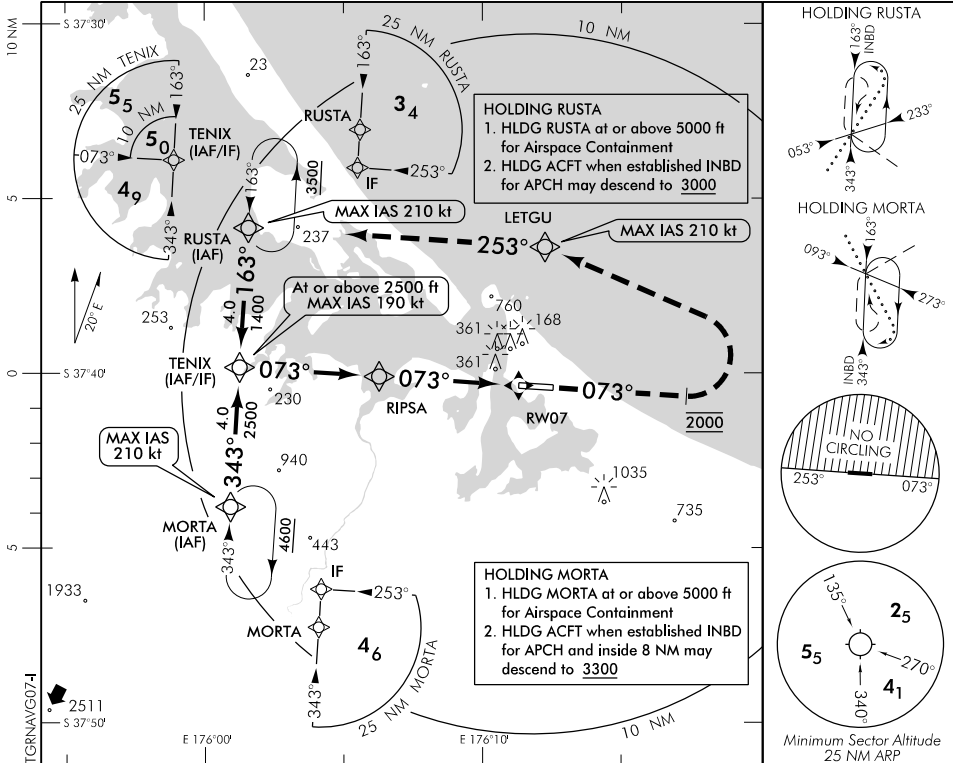
RNAV (GNSS) RWY 07

BAY APPROACH: 119.5 123.8

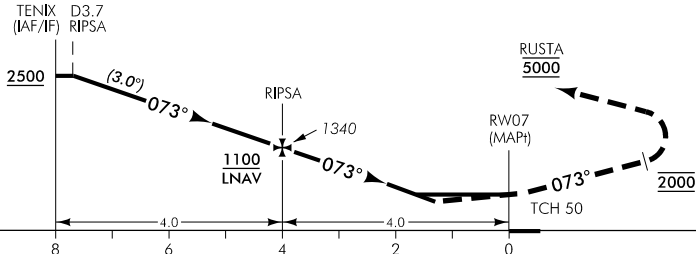
TOWER: 118.3 123.4 129.2

ATIS: 126.6

UNATTENDED: 118.3



Use Tauranga QNH



MISSED APCH: MAX IAS 185 kt until turn complete. Track 073° to 2000, turn LEFT direct to LETGU, MAX IAS 210 kt.
 Track 253° to RUSTA hold 5000

DISTANCE TO WPT	TENIX	3	2	1	RIPSA	3	2	1.7	1.4	RW07
Advisory Altitude 3°	2610	2290	1970	1660	1340	1020	700	MDA	DA	MDA
Category	A			B		C		D		
LNAV/VNAV *	510(497) - 1600				520(507) - 2400			530(517) - 2400		
LNAV	610(597) - 1600				610(597) - 2800					
Circling #	610(597) - 1900		800(787) - 2800		1430(1417) - 3700		1450(1437) - 4600			

* Valid to AD temperature -5°C. Use of remote QNH NA
 # Circling NA north of RWY 07/25. CAT C,D circling airspace containment not assured.

Changes from 23 MAY 19: Advisory altitude table, minima, TG port crane ELEV increased.

Effective: 30 JAN 20

ELEV 13

CAT A,B,C,D

TAURANGA

RWY 25 THR ELEV 13

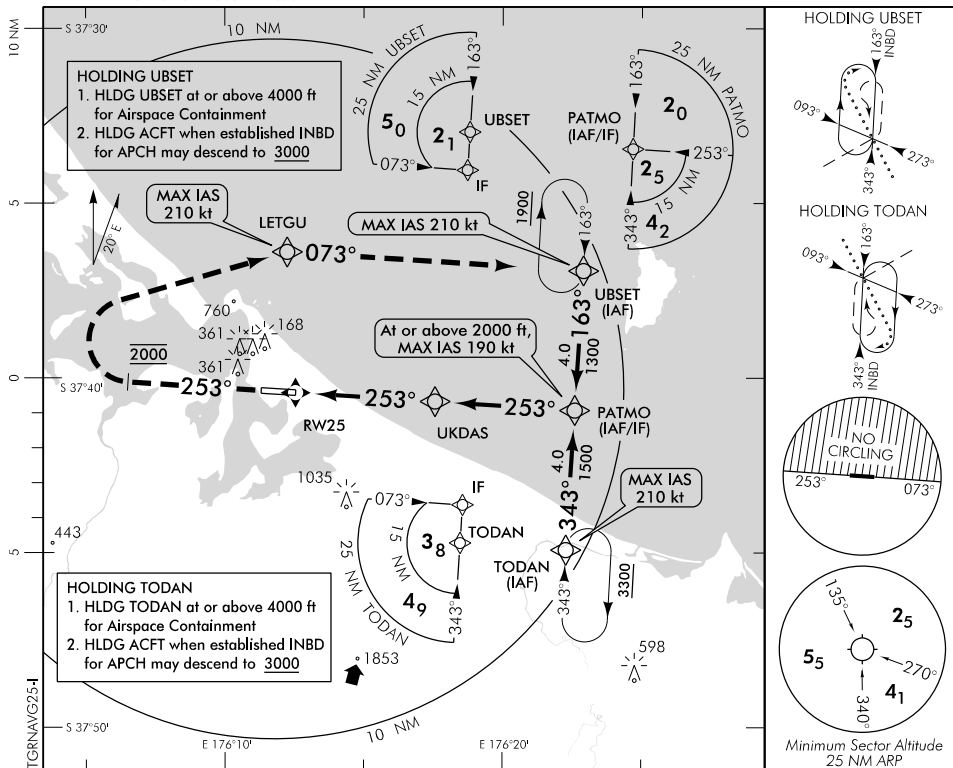
RNAV (GNSS) RWY 25

BAY APPROACH: 119.5 123.8

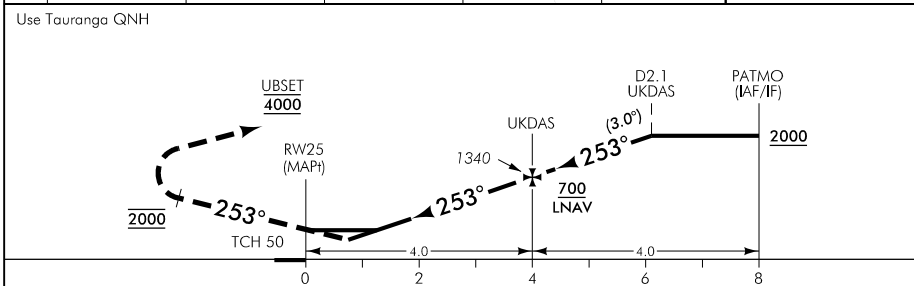
TOWER: 118.3 123.4 129.2

ATIS: 126.6

UNATTENDED: 118.3



Changes from 23 MAY 19: TG port crane ELEV increased.



MISSED APCH: MAX IAS 185 kt until turn complete. Track 253° to 2000, turn RIGHT direct to LETGU, MAX IAS 210 kt.
 Track 073° to UBSET hold 4000

DISTANCE to WPT	RW25	0.9	1.2	2	3	UKDAS	1	2	3	PATMO
Advisory Altitude 3°	MDA	DA	MDA	700	1020	1340	1660	1970	2290	2610
Category	A			B			C		D	
LNAV/VNAV *	350(337) - 1500					350(337) - 1600				
LNAV	450(437) - 1500					450(437) - 2800				
Circling #	560(547) - 1900		800(787) - 2800			1430(1417) - 3700		1450(1437) - 4600		

* Valid to AD temperature -5°C. Use of remote QNH NA
 # Circling NA north of RWY 07/25. CAT C,D circling airspace containment not assured.

Effective: 30 JAN 20

TAURANGA

RNAV (GNSS) RWY 25

