



ELEV 13

CAT A,B,C

TAURANGA
NDB/DME RWY 07

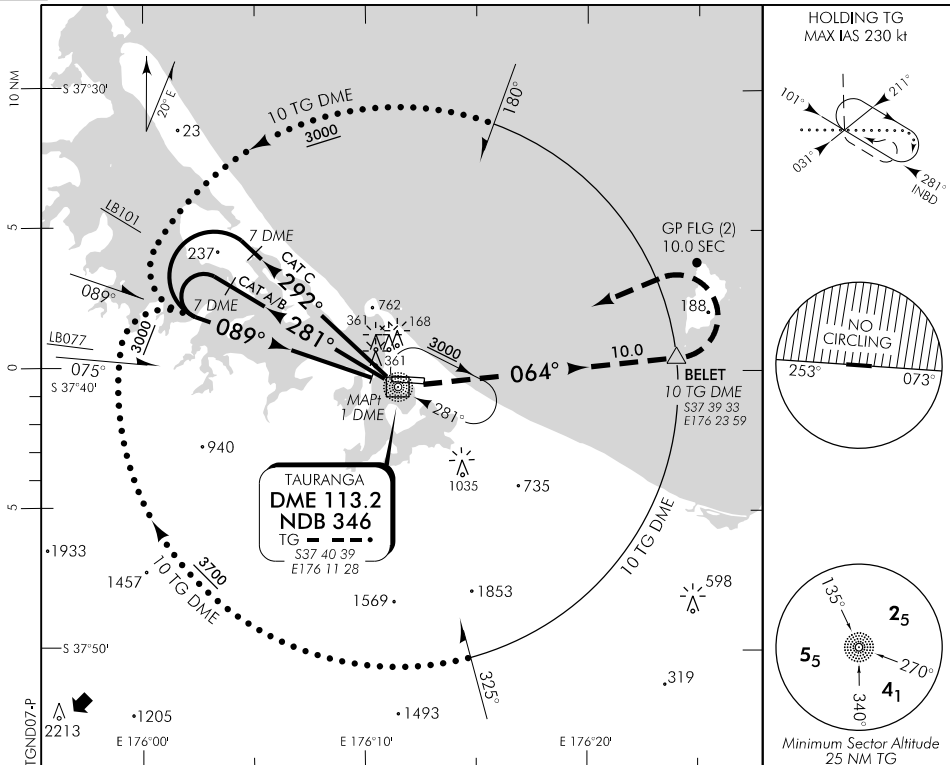
RWY 07 THR ELEV 13

BAY APPROACH: 119.5 123.8

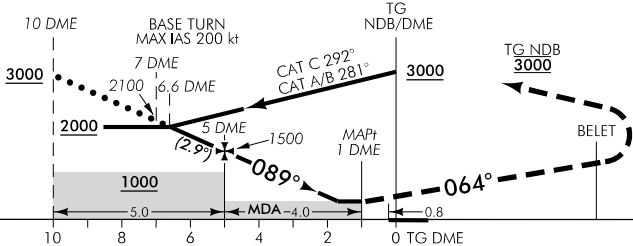
TOWER: 118.3 123.4 129.2

ATIS: 126.6

UNATTENDED: 118.3



Use Tauranga QNH



MISSED APCH: Track 089° to TG NDB, turn LEFT track 064° to BELET, turn LEFT direct to TG NDB hold 3000

TG DME DIST	10	9	8	7	6	5	4	3	2.0	MAP1
Advisory Altitude 5%	3000	2700	2400	2100	1800	1500	1200	900	MDA	MDA
Category	A			B		C		D		
NDB/DME	610(597) - 1600					610(597) - 2800			NA	
Circling *	610(597) - 1900			800(787) - 2800		1430(1417) - 3700			NA	

*Circling NA north of RWY 07/25. CAT C circling area not fully contained within controlled airspace.

Changes from 24 MAY 18: Marine light removed, advisory altitude table, minima, TG port crane ELEV increased.

Effective: 30 JAN 20

ELEV 13

CAT A,B,C

TAURANGA

RWY 25 THR ELEV 13

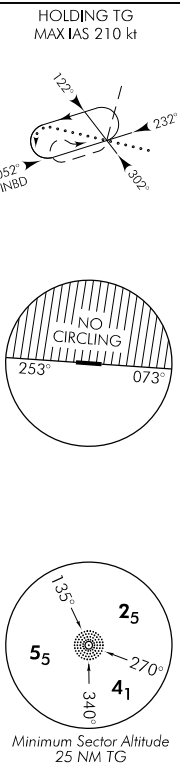
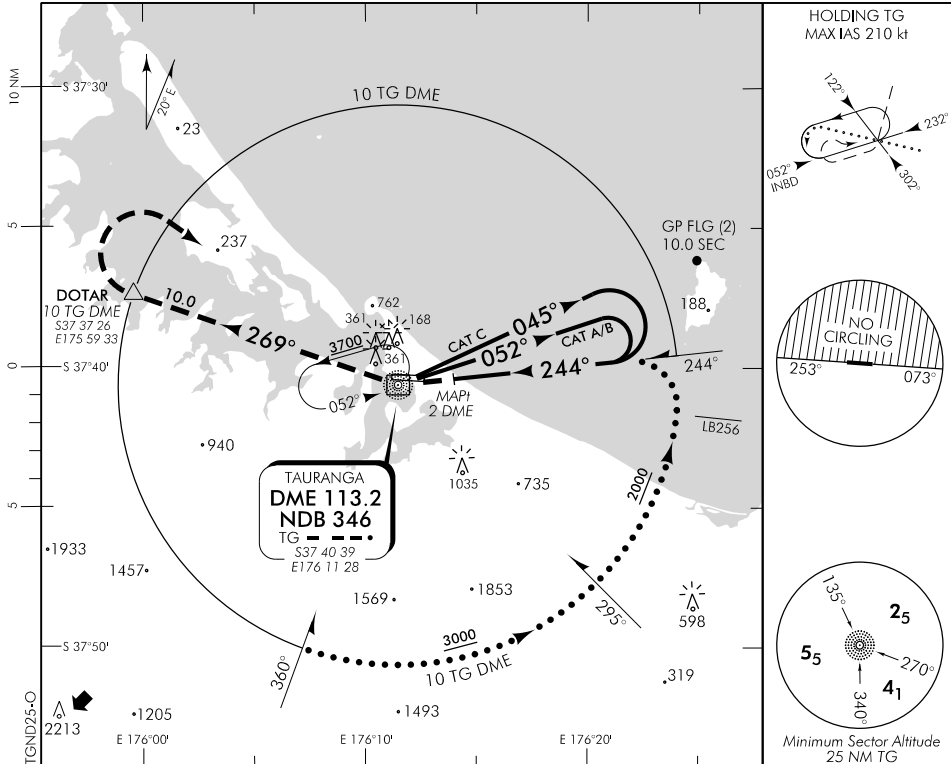
NDB/DME RWY 25

BAY APPROACH: 119.5 123.8

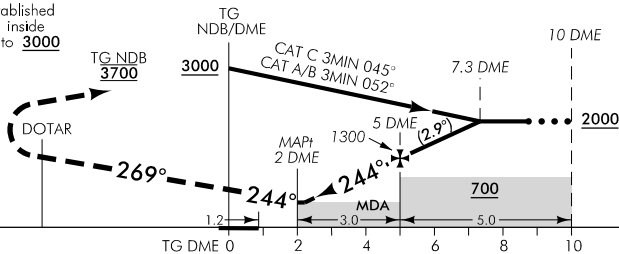
TOWER: 118.3 123.4 129.2

ATIS: 126.6

UNATTENDED: 118.3



Use Tauranga QNH
 HLDG ACFT when established
 INBD for APCH and inside
 10 DME may descend to **3000**



MISSED APCH: Track 244° to TG NDB, turn RIGHT track 269° to DOTAR, turn RIGHT direct to TG NDB hold **3700**

DME DIST	MAPt 2	2.2	3	4	5	6	7	7.3
Advisory Altitude 5%	MDA	MDA	700	1000	1300	1600	1900	2000
Category		A	B		C		D	
NDB/DME		480(467) - 1600			480(467) - 2400			NA
Circling *		560(547) - 1900	800(787) - 2800	1430(1417) - 3700				

*Circling NA north of RWY 07/25. CAT C circling area not fully contained within controlled airspace.

Changes from 24 MAY 18: Marine light removed, TG-port crane ELEV increased.

Effective: 30 JAN 20

