

ELEV 13

CAT A,B,C,D

TAURANGA

NZTG

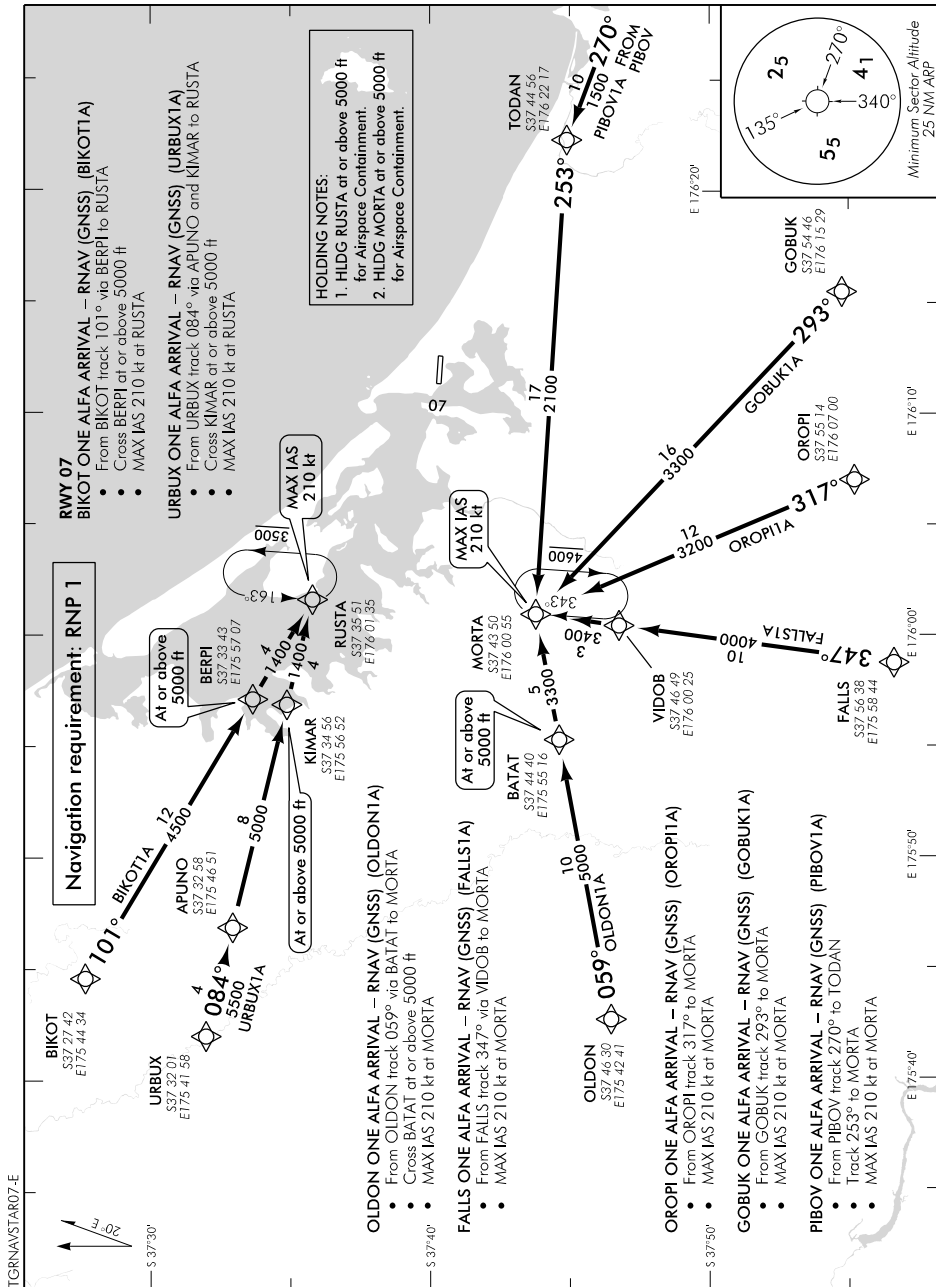
RNAV (GNSS) STAR RWY 07

BAY APPROACH: 119.5 123.8

TOWER: 118.3 129.2

ATIS: 126.6

UNATTENDED: 118.3



RWY 07
BIKOT ONE ALFA ARRIVAL – RNAV (GNSS) (BIKOTIA)
 From BIKOT track 101° via BERPI to RUSTA
 • Cross BERPI at or above 5000 ft
 • MAX IAS 210 kt at RUSTA

URBUX ONE ALFA ARRIVAL – RNAV (GNSS) (URBUXIA)
 From URBUX track 084° via APUNO and KIMAR to RUSTA
 • Cross KIMAR at or above 5000 ft
 • MAX IAS 210 kt at RUSTA

HOLDING NOTES:
 1. HLDG RUSTA at or above 5000 ft for Airspace Containment.
 2. HLDG MORTA at or above 5000 ft for Airspace Containment.

Navigation requirement: RNP 1

OLDON ONE ALFA ARRIVAL – RNAV (GNSS) (OLDONIA)
 From OLDON track 059° via BATAT to MORTA
 • Cross BATAT at or above 5000 ft
 • MAX IAS 210 kt at MORTA

FALLS ONE ALFA ARRIVAL – RNAV (GNSS) (FALLSTIA)
 From FALLS track 347° via VIDOB to MORTA
 • MAX IAS 210 kt at MORTA

OROPI ONE ALFA ARRIVAL – RNAV (GNSS) (OROPIA)
 From OROPI track 317° to MORTA
 • MAX IAS 210 kt at MORTA

GOBUK ONE ALFA ARRIVAL – RNAV (GNSS) (GOBUKIA)
 From GOBUK track 293° to MORTA
 • MAX IAS 210 kt at MORTA

PIBOV ONE ALFA ARRIVAL – RNAV (GNSS) (PIBOVIA)
 From PIBOV track 270° to TODAN
 • Track 253° to MORTA
 • MAX IAS 210 kt at MORTA

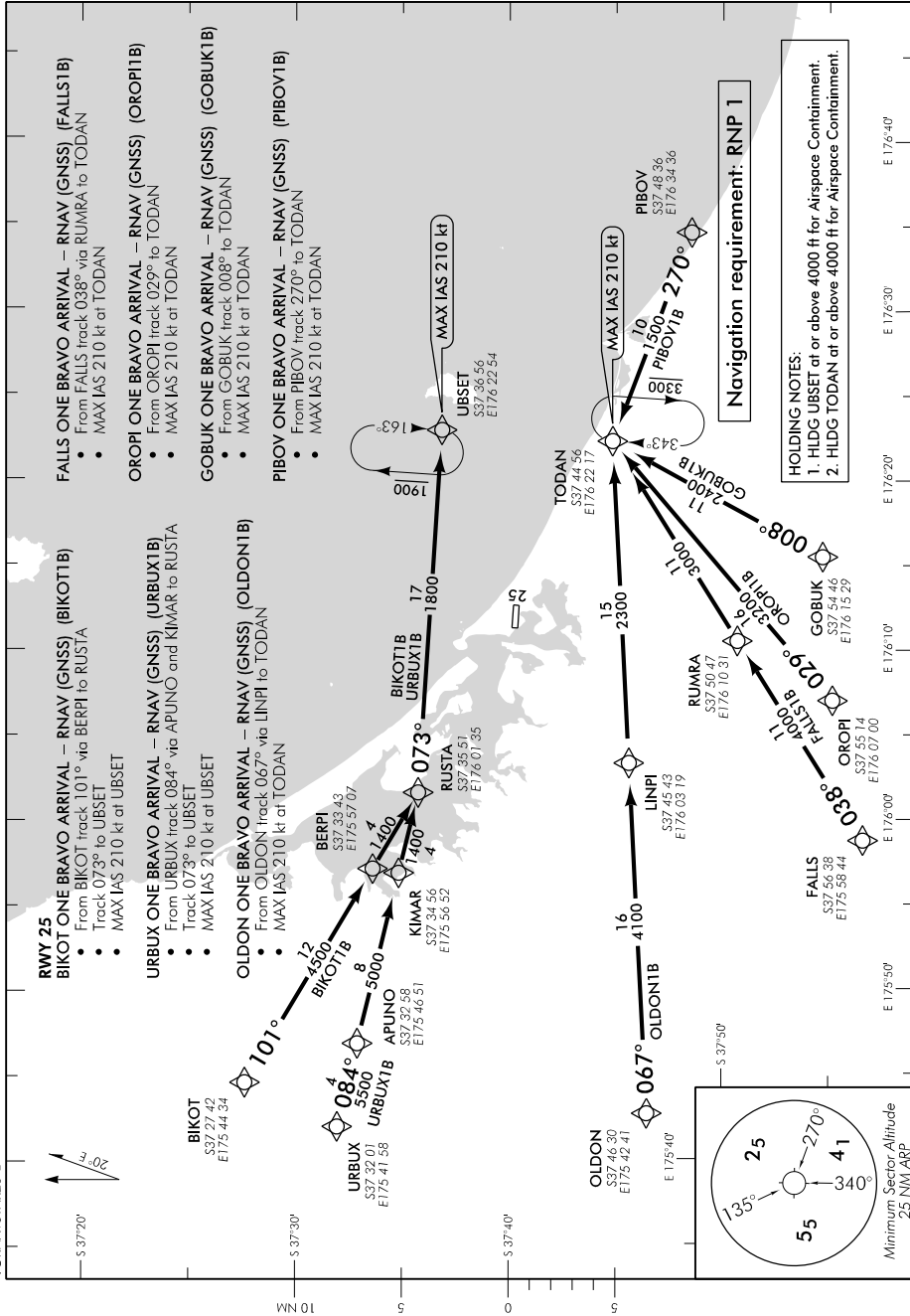
Minimum Sector Altitude
 25 NM AHP



Effective: 28 MAR 19

Changes from 24 MAY 18: CAT D added.

TGRNAVSTAR25-E



Changes from 24 MAY 18: CAT D added.

